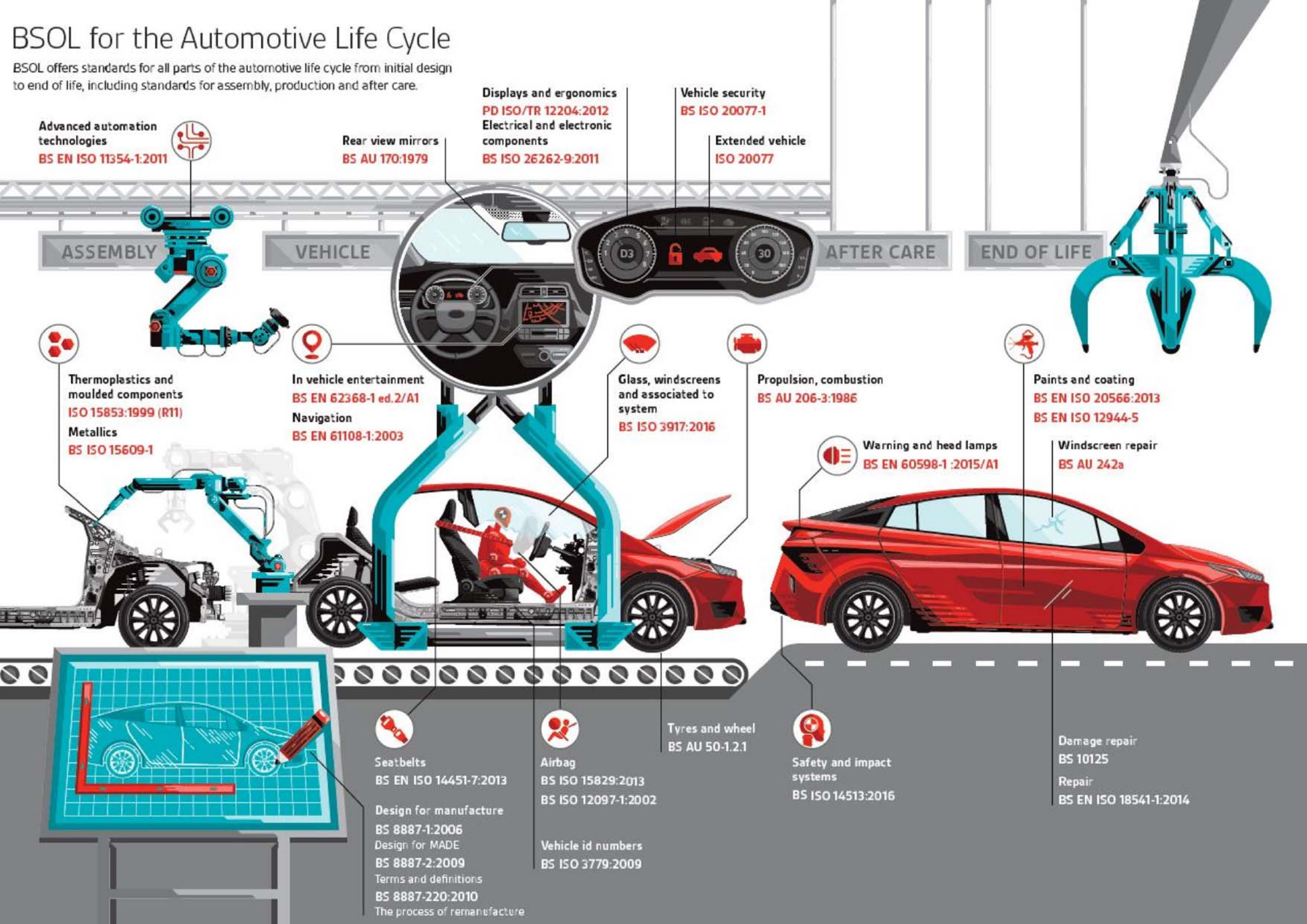


# BSOL for the Automotive Life Cycle

BSOL offers standards for all parts of the automotive life cycle from initial design to end of life, including standards for assembly, production and after care.



**Advanced automation technologies**  
BS EN ISO 11354-1:2011

**ASSEMBLY**

**Thermoplastics and moulded components**  
ISO 15853:1999 (R11)  
**Metallics**  
BS ISO 15609-1

**Rear view mirrors**  
BS AU 170:1979

**VEHICLE**

**In vehicle entertainment**  
BS EN 62368-1 ed.2/A1  
**Navigation**  
BS EN 61108-1:2003

**Displays and ergonomics**  
PD ISO/TR 12204:2012  
**Electrical and electronic components**  
BS ISO 26262-9:2011

**Vehicle security**  
BS ISO 20077-1

**Extended vehicle**  
ISO 20077

**AFTER CARE**

**Glass, windcreens and associated to system**  
BS ISO 3917:2016

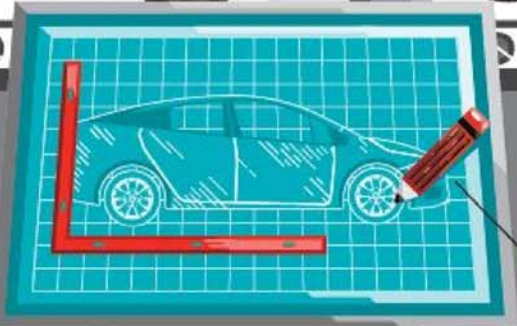
**Propulsion, combustion**  
BS AU 206-3:1986

**Warning and head lamps**  
BS EN 60598-1 :2015/A1

**END OF LIFE**

**Paints and coating**  
BS EN ISO 20566:2013  
BS EN ISO 12944-5

**Windscreen repair**  
BS AU 242a



**Seatbelts**  
BS EN ISO 14451-7:2013

**Design for manufacture**  
BS 8887-1:2006  
**Design for MADE**  
BS 8887-2:2009  
**Terms and definitions**  
BS 8887-220:2010  
**The process of remanufacture**

**Airbag**  
BS ISO 15829:2013  
BS ISO 12097-1:2002

**Vehicle id numbers**  
BS ISO 3779:2009

**Tyres and wheel**  
BS AU 50-1.2.1

**Safety and impact systems**  
BS ISO 14513:2016

**Damage repair**  
BS 10125  
**Repair**  
BS EN ISO 18541-1:2014